



4 Charles Clowes Walk, London
SW11

GARTONJONES.COM

4 Charles Clowes Walk, London
, SW11

GARTON JONES.COM

9 Albert
Embankment
London
SE1 7SP

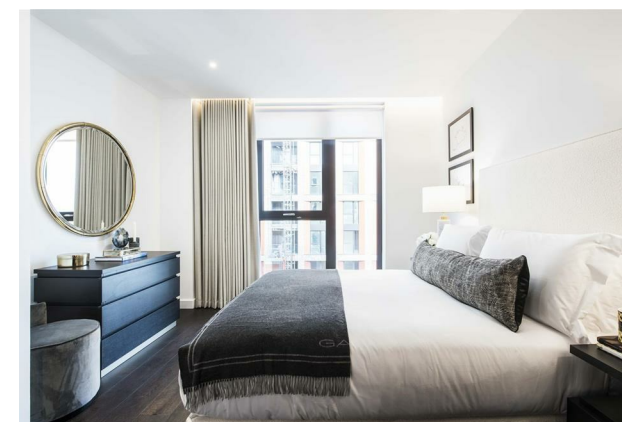
Lettings:
+44 (0) 20 7735 1888
nineelms@gartonjones.com
www.gartonjones.com

£1,800 Per Week

A spacious 3 double bedroom, two-bathroom apartment of approx.886sq.ft (82.31sq.m) located in Thornes House, part of The Residence Collection in Nine Elms. This elegant apartment is on the 6th floor of this development which for the residents' private use features a 24-hour concierge, gym, media room, board room and dedicated building manager. Ideally located within close walking distance to the extensive transport links at Vauxhall Station, amenities such as the Black Cab Coffee Co as well as a Waitrose convenience store are located nearby and you are also close to a host of other local shops and restaurants.

Please note furniture may differ to that shown in the current photos.

- 3 Bedrooms
- 1123 sq.ft
- 2 Luxury Bathrooms (1 En-Suite)
- Open Plan Reception Room
- Modern Kitchen
- Balcony
- Residents Gym
- 24 Hour Concierge
- Underfloor Heating
- 0.2 Miles from Nine Elms Tube Station





EIGHTH FLOOR

APPROX. GROSS INTERNAL AREA *
Apartment - 1,123 Ft² - 104.29 M²
Balcony - 89 Ft² - 8.27 M²

Property Details:
APARTMENT 42
THORNES HOUSE
4 CHARLES CLOWES WALK
LONDON
SW11 7AG

Plans Drawn: 29.01.2019

Surveyed and Drawn By:
BKR
Hideaway Work Space
1 Empire Mews
London
SW16 2BF

Tel: 0345 257 2023
info@bkrfloorplans.co.uk
www.bkrfloorplans.co.uk
© BKR 2019

